



Bathing establishment Fact Sheet

Bathhouse name	LIDO
Address	Lungomare Italia, 110
City	Follonica (Gr)
Contacts	Tel. +39 3356003913 – email info@hotellidofollonica.com
Website	https://www.hotellidofollonica.com/en

TESTED BY: [Handy Superabile - Social Promotion Association](#) in summer 2023

Please note The following information refers to the verification date shown at the bottom of each card. **The Association** is not responsible for any significant changes made by the property after the visit.

Summary

Bathing establishment Fact Sheet	1
Arrival at the facility.....	2
Private/public parking.....	2
Pathway from the parking lot to the main entrance	2
Reception.....	3
Bar/restaurant	4
Internal pathways and common services	5
Internal pathways.....	5
Toilet and shower accessible to guests with reduced mobility	5
Changing room	6
Beach.....	6
Children's play area	8
Swimming pool	8
Doctors' Offices/Healthcare Facilities	8



Project carried out with the contribution of the





Arrival at the facility

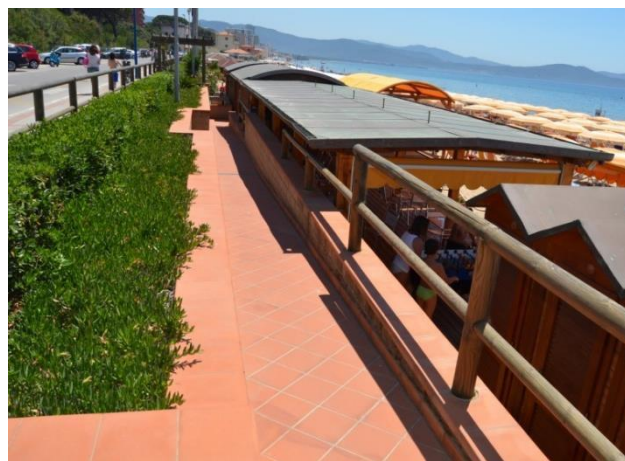
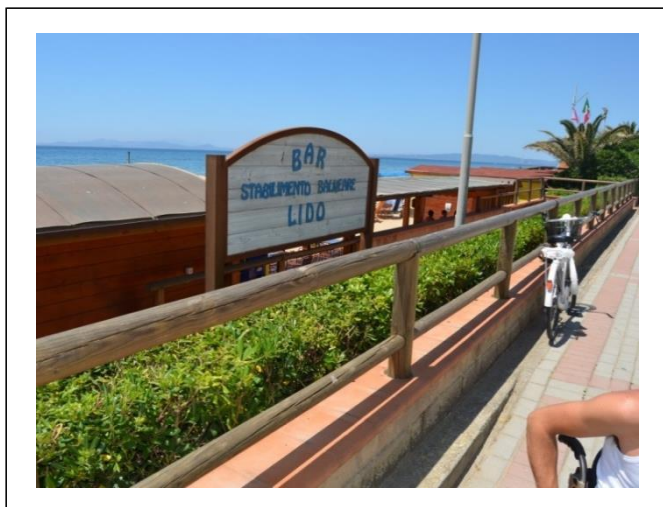
Private/public parking

Presence of private parking	NO
Presence of parking space reserved for people with disabilities	asphalted public car parks, of which 1 is reserved for the disabled, located in front of the structure and marked with horizontal and vertical signs, and 2 in via Isola della Gorgona at approx. 50 meters
Type of parking surface	ASPHALT
Public parking nearby	YES
	

Pathway from the parking lot to the main entrance

Pathway from the car park to the entrance	through 10 steps that can be overcome with two ramps 9.40 m long, interspersed with a platform, with a slope of 10%.
There are markers and tactile maps	NO
Usable door/entrance width	more than 90 cm






Reception

Umbrella booking system	<input type="checkbox"/> Via web <input checked="" type="checkbox"/> By phone <input checked="" type="checkbox"/> On-site
Presence of multilingual staff	Not detected
Presence of plant plan with key to services available	NO
Presence of visuo-tactile map	NO
Bulletin board/information panels at an average height of 130 cm in a well-lit area and font size at least 14 dpi with a contrast ratio greater than 4.5:1	NO
The staff attended training courses on welcoming people with different disabilities	NO





Bar/restaurant

Type of venue	Bar/restaurant
Access to the premises	Flat
Usable door/entrance width	more than 90 cm
Bar counter	115 cm
Types of tables	4-legged
Space underneath the tables from the floor	70 cm
Multilingual menu	Not detected
Menus with large print fonts	NO
Braille menu	NO
Table service for people with disabilities	YES
Availability of gluten-free food	<input type="checkbox"/> bread <input type="checkbox"/> pasta <input type="checkbox"/> biscuits <input checked="" type="checkbox"/> ice cream <input type="checkbox"/> Pre-packaged foods
	





Internal pathways and common services

Internal pathways

Indicate whether the pathways connecting the entrance to the beach are flat or with ramps in addition to those already described	Obstacle-free paths
--	---------------------

Toilet and shower accessible to guests with reduced mobility

Number of toilets accessible/usable by guests with reduced mobility	1
Access to the premises	Flat
Usable width of the entrance door	90 cm
Toilet height	45 cm
Open front toilet seat	YES
Support handles	to the right of the toilet
Flexible hand shower at the side of the toilet	NO
Free space on the sides of the toilet	left 25 cm on the right above 80 cm front panel over 90 cm
Electric doorbell/phone	YES
Washbasin with space underneath for wheelchair	72 cm
Height from the ground on the bottom edge of the mirror	not sufficient for use by a person in a wheelchair
Baby changing table	Not detected





	
Accessible shower available for guests with reduced mobility	No separate from the toilet room
Shower type	open-type
Floor-level shower	YES
Shower chair	plastic with armrests
Grab bar	NO
Presence of shower head or ups and downs	fixed shower head
Electric doorbell/phone	YES

Changing room

Accessible changing room available for guests with reduced mobility	NO
---	----

Beach

Type of beach	sand
Access to the beach	Flat
Walkway to reach the umbrellas	YES
Type of walkway	wooden





Walkway width	90 cm
	
Removable Platform between the walkway and the umbrella station to facilitate the passage and parking wheelchair	YES
Amphibious beach chair available for helping people with reduced mobility to enjoy swimming (owned by the establishment or by association)	YES
	





Children's play area

Children's play area	inaccessible to children with reduced mobility due to sandy bottom
There are games for children with reduced mobility	NO

Swimming pool

The property has a swimming pool	NO
----------------------------------	----

Doctors' Offices/Healthcare Facilities

Hospitals near the facility	Ospedale S.Andrea Massa Marittima V.le Risorgimento, 43, 58024 Massa Marittima GR
Other Healthcare Facilities	TOURIST Emergency Medical Service from 15 June to 9 September 2018 in Viale Europa (Health District) – tel. 0566 59613.

TESTED BY: **Handy Superabile Social Promotion Association in summer 2023**

